

SECTION

V

APPENDICES

APPENDIX A

CORRIDOR INFORMATION

CORRIDOR INFORMATION

The table on pages 138-142 in Appendix A provides information about the corridor segments (projects) that were created and evaluated in this Plan. Specifically, it includes information for the following fields:

BPID: ID number for each project, which allows for identification of the project on the maps provided in this appendix and online.

Location/Name: Information about the general location of the project, such as the name of the road, river or stream that the project follows.

Type: Type of infrastructure being recommended, where SUP is shared use path, BL indicates bike lanes with sidewalk, and SR indicates shared road with sidewalk.

Status: Indicates whether there is any existing infrastructure, where BL is bike lane, SR is shared road, and TR is trail.

APT Tier: Prioritization tier calculated using the ActiveTrans Priority Tool (APT), where Tier 1 is highest priority.

Final Tier: The final prioritization tier, reflecting the result of the APT evaluation and additional adjustments, where Tier 1 is highest priority.

Prioritization Reason: If the final prioritization is different from the APT prioritization, the reason for this adjustment is provided.

Length (miles): Length of the project in miles.

Cost (Low): Low estimate for the cost (in million \$) of the project, excluding cost for bridges, tunnels or overcoming other barriers. Estimated primarily using costs from a VDOT planning level cost estimation tool. Low cost estimates used were \$510,000 per mile for bike lanes, \$30,000 per mile for shared roadway, \$350,000 per mile for sidewalk, and \$1,280,000 for shared use path.

Cost (High): High estimate for the cost (in million \$) of the project, excluding cost for bridges, tunnels or overcoming other barriers. Estimated primarily using costs from a VDOT planning level cost estimation tool. High cost estimates used were \$770,000 per mile for bike lanes, \$50,000 per mile for shared roadway, \$1,160,000 per mile for sidewalk, and \$2,090,000 for shared use path.

Barrier Cost: Estimate of cost necessary to build bridges, tunnels, or other infrastructure that crosses major barriers.

CORRIDOR INFORMATION

BPID	Location/Name	Type	Status	APT Tier	Final Tier	Prioritization Reason	Length (miles)	Cost (Low)	Cost (High)	Barrier Cost
BP1	Ivy Rd - Bypass	SUP	EX SR	Tier 2	Tier 2		0.89	1.60	3.35	0.88
BP2	E Market St - West	BL		Tier 2	Tier 2		0.61	0.43	0.84	
BP3	Monticello Rd	BL		Tier 1	Funded		1.19			
BP4	Barracks Rd - City West	BL		Tier 3	Tier 2	Consistency	0.52	0.37	0.71	
BP5	Avon St - Monticello Rd	BL		Tier 2	Tier 1	Consistency	0.31	0.22	0.43	
BP6	Water St	BL	EX SR	Tier 1	Tier 1		0.82	0.58	1.13	
BP7	Ridge McIntire Rd - Downtown	BL		Tier 1	Tier 1		0.28	0.20	0.39	
BP9	Dairy Rd	BL		Tier 3	Tier 3		0.52	0.37	0.72	
BP10	9th St NE	BL		Tier 1	Funded		0.35			
BP12	High St - West	BL		Tier 2	Tier 2		0.56	0.40	0.78	
BP13	US250 - East of Park St	SUP		Tier 2	Tier 1	Public Input	0.48	0.86	1.80	
BP14	US250 - West of Park St	SUP		Tier 2	Tier 1	Public Input	0.06	0.10	0.22	
BP15	High St - East	BL		Tier 2	Tier 2		0.37	0.26	0.51	
BP16	Grove Rd	BL		Tier 3	Tier 3		0.80	0.57	1.10	
BP17	Barracks Rd - City East	BL		Tier 2	Funded		0.79			
BP18	US29 - County boarder	SUP		Tier 3	Tier 3		5.91	10.60	22.25	1.40
BP19	US29 - Rio Rd	SUP		Tier 1	Tier 1		1.15	2.06	4.32	
BP20	US29 - Fashion Square	SUP		Tier 1	Tier 1		1.26	2.26	4.73	
BP21	Fontaine Ave - Interchange	SUP		Tier 2	Tier 2		0.78	1.40	2.95	
BP22	Commonwealth Dr - North	SR		Tier 2	Tier 2		0.75	0.37	1.56	
BP22	Commonwealth Dr - North	SUP		Tier 2	Tier 2		0.16	0.29	0.60	
BP23	Emmet St - South of US250	SUP		Tier 1	Tier 1		0.33	0.59	1.25	
BP24	Emmet St - Massie Rd	SUP		Tier 1	Funded		0.43			
BP25	Emmet St - Barracks Shopping	SUP		Tier 1	Tier 1		0.55	0.98	2.05	
BP26	Pantops Bridge Rte 20 - US64	SUP		Tier 1	Tier 1	Alternate Route	0.12	0.21	0.45	2.10
BP27	Intersection	SUP		Tier 1	Tier 2		0.81	1.45	3.05	
BP28	5th St	SUP	EX BL	Tier 1	Tier 1		1.80	3.23	6.79	
BP29	Avon St - City Boundary	BL		Tier 1	Tier 1		0.40	0.29	0.56	0.88
BP30	Copeley Rd	BL		Tier 1	Tier 1		0.37	0.27	0.52	
BP31	Preston Ave	BL		Tier 2	Tier 2		0.66	0.47	0.92	
BP33	Meade Ave	BL		Tier 3	Tier 3		0.41	0.29	0.57	
BP34	Ivy Rd - Ednam	SUP		Tier 3	Tier 3		1.85	3.31	6.95	
BP35	Whitewood Rd	BL		Tier 3	Tier 1	Repaving	0.58	0.55	1.40	
BP36	Greenbrier Dr - East	BL	EX SR	Tier 1	Tier 1		0.43	0.30	0.59	
BP37	McCormick Rd - West	BL	EX SR	Tier 1	Tier 1		0.39	0.28	0.55	

CORRIDOR INFORMATION

BPID	Location/Name	Type	Status	APT Tier	Final Tier	Prioritization Reason	Length (miles)	Cost (Low)	Cost (High)	Barrier Cost
BP38	Rio Rd - US29	BL		Tier 2	Tier 1	Connects Existing	0.40	0.38	0.96	
BP39	Hydraulic Rd - East of Georgetown Rd	SUP		Tier 1	Tier 1		0.67	1.21	2.54	
BP40	Barracks Rd - County	BL		Tier 2	Tier 2		0.94	0.90	2.29	
BP41	Ivy Rd - East of Ivy	SUP		Tier 3	Tier 3		3.04	5.45	11.43	
BP42	Three Notched Rd	SUP		Tier 3	Tier 3		3.90	6.99	14.68	
BP43	Hydraulic Rd - West of US29	SUP		Tier 1	Tier 1		0.31	0.56	1.18	
BP44	US29 - Bypass	SUP		Tier 1	Tier 3	Alternate Route	0.41	0.73	1.53	
BP45	McCormick Rd - East	BL	EX SR	Tier 1	Tier 1		0.51	0.36	0.71	
BP46	Long St	SUP		Tier 1	Tier 1		0.54	0.96	2.01	
BP47	Avon St Ext - County Boundary	SUP		Tier 1	Tier 1		0.74	1.33	2.79	
BP48	Peter Jefferson Pkwy	BL		Tier 2	Tier 2		1.22	1.47	4.23	
BP49	Berkmar Dr - South	BL		Tier 1	Tier 2	Alternate Route	0.66	0.80	2.31	
BP50	Commonwealth Dr - South	BL		Tier 2	Tier 2		0.76	0.54	1.06	
BP51	Berkmar Dr - Rio Hill	SUP	EX BL	Tier 2	Funded		1.41			
BP52	Georgetown Rd	BL		Tier 3	Tier 3		1.09	0.78	1.51	
BP53	Crozet Dr - North	BL		Tier 3	Tier 3		1.20	1.15	2.91	
BP54	Fontaine Ave - City Boundary	BL		Tier 2	Funded		0.55			
BP55	Ivy Rd - West of Ivy	SUP		Tier 3	Tier 3		3.58	6.42	13.47	1.40
BP56	Earlsville Rd	BL		Tier 3	Tier 3		0.67	0.80	2.32	
BP57	Lewis and Clark Dr Ext	SUP		Tier 3	Funded		1.10			
BP58	US29 - Airport	SUP		Tier 3	Tier 3		1.27	2.28	4.80	
BP59	McIntire Rd	SUP		Tier 1	Tier 1		0.43	0.78	1.63	
BP60	Avon St Ext - US64 Crossing	SUP		Tier 2	Tier 1	Public Input	0.84	1.50	3.15	2.80
BP61	Reservoir Rd	SR		Tier 3	Tier 3		2.82	1.38	5.88	
BP62	US29 - Hydraulic	SUP		Tier 1	Tier 3	Alternate Route	0.89	1.59	3.33	
BP64	Biscuit Run - Connector	SUP		Tier 1	Tier 1		0.98	1.76	3.69	
BP66	Rte 20 - South of US64	SUP		Tier 2	Tier 2		1.17	2.09	4.38	
BP68	Rivanna River - US29 Connection	SUP		Tier 3	Tier 1	County Effort	1.10	1.98	4.16	
BP69	Southern Railway	SUP		Tier 3	Tier 2	County Effort	1.96	3.52	7.38	
BP70	Rivanna River - South of Pen Park	SUP		Tier 3	Tier 2	City Effort	0.53	0.95	1.98	
BP71	Moore's Creek - Quarry Park	SUP		Tier 2	Tier 2		0.67	1.20	2.52	
BP72	Stribling Ave Ext	SUP	EX TR	Tier 2	Tier 2		1.17	2.10	4.41	0.52
BP73	Carters Mountain Connector	SUP		Tier 2	Tier 2		0.64	1.15	2.41	2.00

CORRIDOR INFORMATION

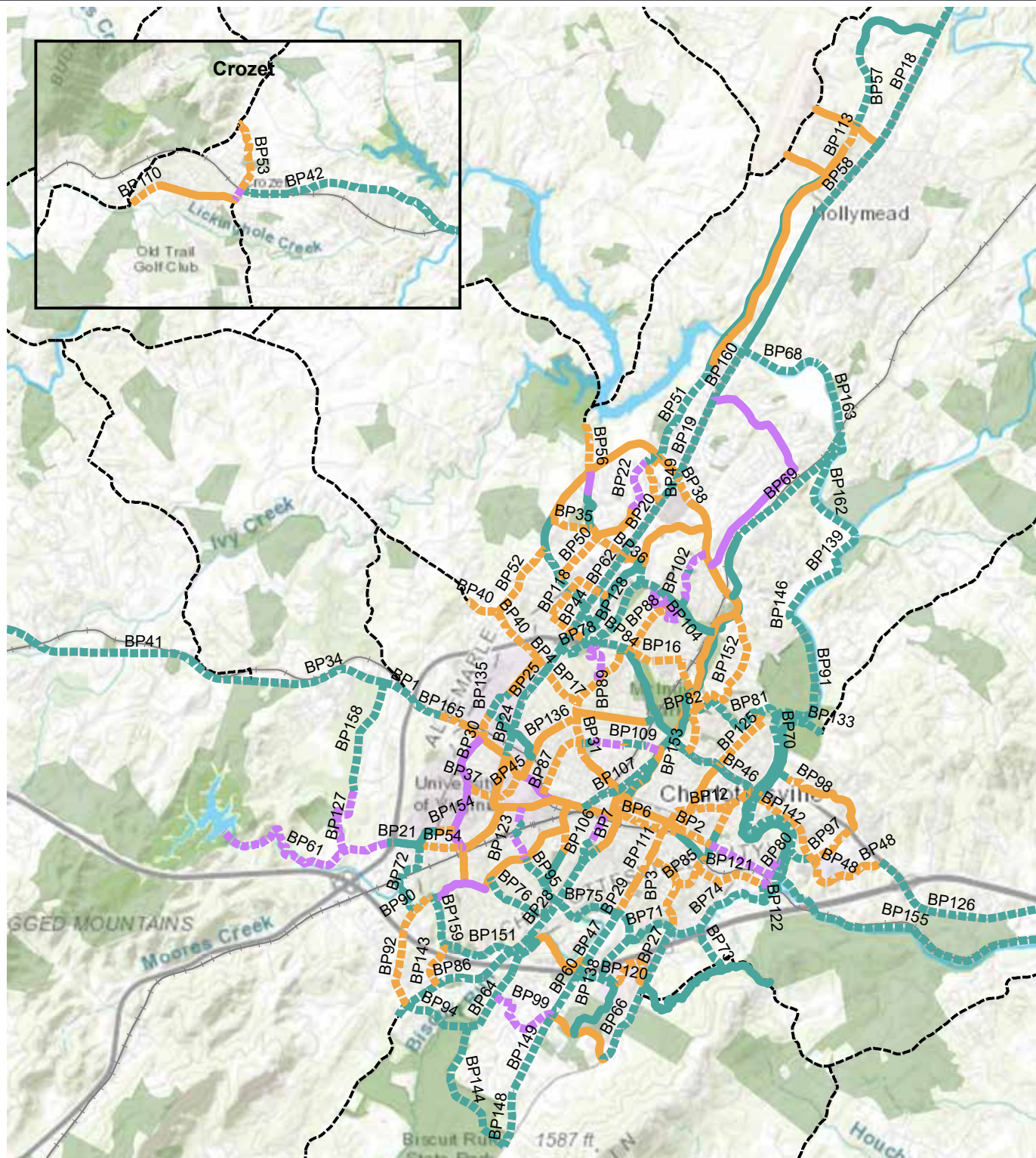
BPID	Location/Name	Type	Status	APT Tier	Final Tier	Prioritization Reason	Length (miles)	Cost (Low)	Cost (High)	Barrier Cost
BP74	Moores Creek - East of Monticello Rd	SUP		Tier 2	Tier 2		1.75	3.14	6.60	0.88
BP75	Moores Creek - Pollocks Branch	SUP		Tier 2	Tier 2		0.96	1.73	3.63	
BP76	Highland Ave Ext	SUP		Tier 2	Tier 3	Alternate Route	1.03	1.85	3.88	
BP77	John Warner Pkway - Connector	SUP		Tier 2	Tier 1	City Effort	0.06	0.12	0.24	2.00
BP78	US250 - Hydraulic crossing	SUP		Tier 1	Tier 1		0.74	1.32	2.77	
BP79	Moores Creek - Azalea Park	SUP	EX TR	Tier 2	Tier 2		0.47	0.84	1.75	
BP80	Riverview Park - Crossing	SUP		Tier 1	Tier 1		0.61	1.09	2.29	2.45
BP81	Meadow Creek - Locust Grove	SUP	EX TR	Tier 2	Funded		0.80			
BP82	Meadow Creek - Rio Rd	SUP	EX TR	Tier 2	Funded		0.72			
BP83	Melbourne Rd	BL		Tier 2	Tier 2		0.69	0.49	0.96	
BP84	US250 Parallel - Hydraulic	SUP		Tier 1	Funded		0.58			
BP85	Carlton Rd	BL		Tier 3	Tier 2	Consistency	0.57	0.41	0.79	
BP86	5th St Ext - Old Lynchburg Rd	SUP		Tier 1	Tier 1		1.84	3.29	6.90	
BP87	14th St NW	BL		Tier 2	Tier 2		0.59	0.42	0.81	
BP88	Meadowbrook Heights Rd	BL		Tier 3	Tier 3		0.80	0.77	1.95	
BP89	Rugby Rd - US250	SR		Tier 3	Tier 3		0.70	0.34	1.46	
BP90	Sunset Ave Ext - North	BL	EX SR	Tier 2	Tier 2		0.32	0.39	1.11	
BP91	Rivanna River - Pen Park	SUP		Tier 3	Tier 3		1.65	2.95	6.19	
BP92	Sunset Ave Ext - South	BL		Tier 2	Tier 2		1.34	1.61	4.66	
BP93	Rugby Rd - Dairy Rd	BL		Tier 3	Tier 3		0.42	0.30	0.58	
BP94	Biscuit Run - 5th St Connector	SUP		Tier 2	Tier 2		0.90	1.62	3.39	0.68
BP95	Rockcreek Rd - Parallel	SUP		Tier 1	Tier 1		0.74	1.33	2.79	
BP97	State Farm Blvd	BL		Tier 2	Tier 2		0.86	1.04	2.99	
BP98	Town and Country Ln Ext - Stony Point	BL		Tier 3	Tier 3		0.29	0.34	0.99	
BP99	Mill Creek Dr	SR		Tier 3	Tier 3		1.17	0.57	2.45	
BP100	Riverview Park	SUP		Tier 2	Tier 2		0.41	0.73	1.54	
BP101	Town and Country Ln Ext - Rivanna	SUP		Tier 3	Tier 3		0.15	0.27	0.56	
BP102	Wakefield Rd	SR		Tier 3	Tier 3		0.39	0.00	0.00	
BP102	Wakefield Rd	SR		Tier 3	Tier 3		0.32	0.00	0.00	
BP102	Wakefield Rd	SUP		Tier 3	Tier 3		0.05	0.09	0.19	
BP103	Meadow Creek - Hillsdale Dr Connect	SUP		Tier 1	Tier 1		0.26	0.46	0.97	

CORRIDOR INFORMATION

BPID	Location/Name	Type	Status	APT Tier	Final Tier	Prioritization Reason	Length (miles)	Cost (Low)	Cost (High)	Barrier Cost
BP104	Bunker Hill Dr	SR		Tier 3	Tier 3		0.41	0.20	0.85	
BP106	Tonsler Park	SR		Tier 1	Tier 2	Alternate Route	0.40	0.00	0.00	
BP106	Tonsler Park	SUP		Tier 1	Tier 2	Alternate Route	0.36	0.64	1.34	
BP107	Norfolk Southern Railroad	SUP		Tier 1	Tier 2	Alternate Route	1.17	2.10	4.41	
BP108	Madison Ave	BL		Tier 2	Tier 2		0.35	0.25	0.48	
BP109	Allied St Ext	SUP		Tier 1	Tier 2	Alternate Route	0.30	0.54	1.13	2.00
BP109	Allied St Ext	SUP		Tier 1	Tier 2	Alternate Route	0.15	0.27	0.57	
BP109	Allied St Ext	SR		Tier 1	Tier 2	Alternate Route	0.42	0.00	0.00	
BP109	Allied St Ext	BL		Tier 1	Tier 2	Alternate Route	0.03	0.02	0.04	
BP109	Allied St Ext	SR		Tier 1	Tier 2	Alternate Route	0.17	0.00	0.00	
BP110	Jarman Gap Rd	BL		Tier 3	Tier 3		0.67	0.81	2.33	
BP111	9th St SE	BL	EX SR	Tier 1	Funded		0.39			
BP112	Brandywine Dr	SR		Tier 3	Tier 3		0.21	0.00	0.00	
BP113	Berkmar Rd - Airport Rugby Ave - US250 Crossing	BL		Tier 3	Tier 1	County Effort	0.41	0.50	1.43	
BP114	Hydraulic Rd - East of US29	SUP		Tier 2	Funded		0.18			
BP115	Hydraulic Rd - East of Hillsdale Dr	SUP		Tier 1	Tier 1		0.22	0.39	0.82	
BP116	Hillsdale Dr	SUP	EX SR	Tier 1	Tier 1		0.19	0.33	0.70	
BP117	Holiday Dr	SUP		Tier 1	Tier 2	Expensive	0.52	0.93	1.96	0.88
BP118	Angus Rd	BL		Tier 1	Tier 2	Expensive	0.93	0.89	2.26	
BP119	College Dr	BL		Tier 3	Tier 3		0.83	1.00	2.89	
BP120	College Dr Ext	SUP		Tier 3	Tier 2	PVCC	0.53	0.96	2.01	
BP121	Broadway St	BL		Tier 2	Tier 1	City County Connect	0.96	0.92	2.32	
BP122	Broadway St Ext	SUP		Tier 3	Tier 1	Consistency	0.24	0.42	0.89	
BP123	Brandon Ave	SR		Tier 2	Tier 2		0.57	0.14	0.60	
BP123	Brandon Ave	SUP		Tier 2	Tier 2		0.22	0.39	0.83	
BP124	10th St NE	BL		Tier 2	Tier 2		0.34	0.24	0.47	
BP125	Locust Ave	BL		Tier 3	Tier 3		1.01	0.96	2.44	
BP126	Richmond Rd	SUP		Tier 3	Tier 3		4.36	7.82	16.41	
BP127	Foxhaven Farm	SR		Tier 3	Tier 3		1.04	0.51	2.18	
BP128	Meadow Creek - Hydraulic	SUP		Tier 1	Tier 1		0.90	1.61	3.37	
BP129	Greenbrier Dr - West	BL	EX SR	Tier 1	Tier 1		0.13	0.12	0.31	
BP130	Sunset Ave - Crossing	SUP		Tier 2	Tier 1	City Effort	0.06	0.10	0.21	0.42
BP131	Moores Creek - East of Avon St	SUP		Tier 2	Tier 2		0.41	0.73	1.54	
BP132	Emmet St - University Ave	SUP		Tier 1	Funded		0.31			
BP133	Darden Towe Park	SUP		Tier 2	Tier 2		0.52	0.93	1.95	

BPID	Location/Name	Type	Status	APT Tier	Final Tier	Prioritization Reason	Length (miles)	Cost (Low)	Cost (High)	Barrier Cost
BP134	Zan Rd	BL		Tier 1	Tier 2	Expensive	0.62	0.75	2.15	
BP135	Massie Rd - Copeley Rd	SUP		Tier 1	Tier 1		0.74	1.32	2.78	
BP136	Rugby Rd - Preston Ave	BL		Tier 3	Tier 3		0.30	0.21	0.41	
BP138	College Dr - US64 Crossing	SUP		Tier 2	Tier 3	Alternate Route	0.80	1.44	3.03	2.00
BP139	Rivanna River - South Fork	SUP		Tier 3	Tier 3		1.05	1.89	3.96	
BP140	South Pantops Dr	BL		Tier 2	Tier 2		0.90	0.87	2.20	
BP141	New House Dr	BL		Tier 1	Tier 1		0.34	0.41	1.20	
BP142	Rivanna River - Pantops	SUP		Tier 2	Tier 2		1.49	2.68	5.62	
BP143	Old Lynchburg Rd	BL		Tier 1	Tier 1		0.63	0.76	2.19	
BP144	Biscuit Run - Park	SUP		Tier 3	Tier 3		1.96	3.51	7.37	
BP145	Rivanna River - Darden Towe Crossing	SUP		Tier 3	Tier 2	Consistency	0.08	0.14	0.30	1.75
BP146	Rivanna River - County Boundary	SUP		Tier 3	Tier 3		0.75	1.34	2.80	
BP147	Meadow Creek - Greenbriar Park	SUP		Tier 1	Tier 1		0.40	0.72	1.51	
BP148	Avon St Ext - Rte 20	SUP		Tier 3	Tier 3		0.77	1.38	2.89	
BP149	Avon St Ext - South of Mill Creek	SUP		Tier 3	Tier 2	Public Input	1.13	2.02	4.24	
BP150	Crozet Dr - South	SR		Tier 3	Tier 2	Inexpensive	0.22	0.00	0.00	
BP151	Moore's Creek - 5th St Crossing	SUP	EX TR	Tier 2	Tier 2		0.62	1.10	2.32	0.88
BP152	Rio Rd - Park St	BL		Tier 2	Tier 2		1.73	2.09	6.02	
BP153	Park St	BL		Tier 3	Tier 2	Consistency	0.65	0.46	0.90	
BP154	Stadium Rd	SUP	EX	Tier 1	Tier 1		0.35	0.00	0.00	
BP154	Stadium Rd	BL		Tier 1	Tier 1		0.25	0.18	0.34	
BP155	Old Mills Trail	SUP		Tier 3	Tier 2	County Effort	7.94	14.24	29.89	
BP156	E Market St - East	SR		Tier 3	Tier 3		0.88	0.43	1.84	
BP156	Riverside Ave Ext	SR		Tier 3	Tier 3		0.43	0.11	0.45	
BP157	9th St SW	BL		Tier 1	Tier 1		0.32	0.23	0.44	
BP158	Foxhaven Farm - Ivy Connector	SUP		Tier 3	Tier 3		1.54	2.76	5.79	
BP159	Moore's Creek - Azalea Park Ext	SUP	EX TR	Tier 2	Tier 2		0.65	1.16	2.43	0.88
BP160	US29 - Rivanna Crossing	SUP		Tier 1	Tier 1		0.92	1.65	3.47	1.40
BP161	5th St Hub	SUP		Tier 1	Tier 1		0.54	0.96	2.02	
BP162	Rivanna River - East of Rail Road	SUP		Tier 3	Funded		1.70			
BP163	Rivanna River - West of Railroad	SUP		Tier 3	Funded	County Effort	1.08			
BP165	Ivy Rd - County Boundary	BL	EX SR	Tier 2	Funded		0.40			



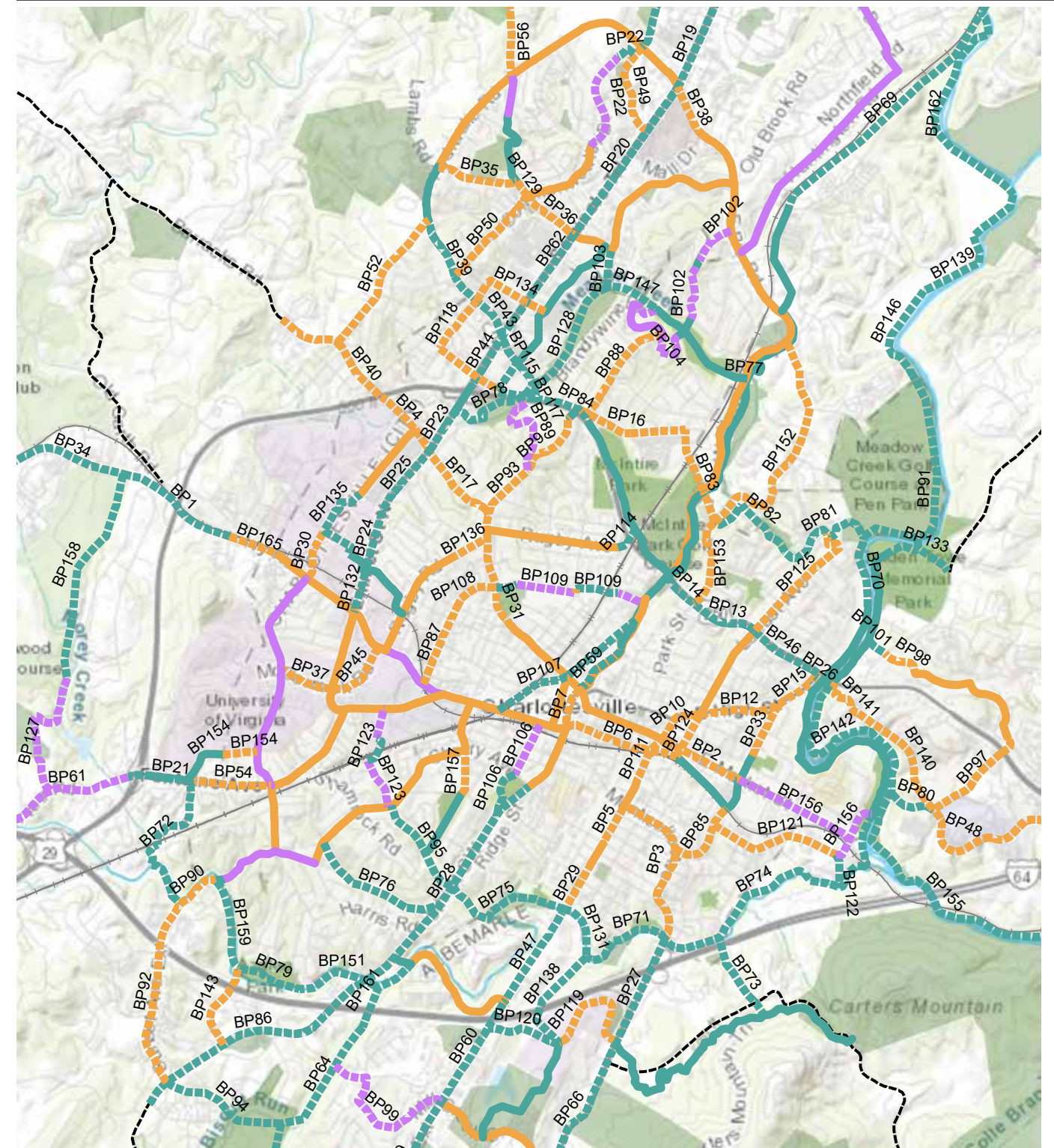


Map A.1
Regional Corridors

ABOUT THIS MAP: This map depicts the corridors identified as the regional bicycle and pedestrian network.

FEATURES

- Parks and Conservation
- Lakes and Rivers
- Railroads
- Proposed Bike Lane and Sidewalk
- Existing Bike Lane and Sidewalk
- Proposed Shared Road and Sidewalk
- Existing Shared Road and Sidewalk
- Proposed Shared Use Path
- Existing Shared Use Path
- Rural Corridors
- BP ID Number

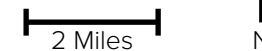


Map A.2
Regional Corridors

ABOUT THIS MAP: This map depicts the corridors identified as the regional bicycle and pedestrian network.

FEATURES

- Parks and Conservation
- Lakes and Rivers
- Railroads
- Proposed Bike Lane and Sidewalk
- Existing Bike Lane and Sidewalk
- Proposed Shared Road and Sidewalk
- Existing Shared Road and Sidewalk
- Proposed Shared Use Path
- Existing Shared Use Path
- Rural Corridors
- BP ID Number



APPENDIX B

PRIORITIZATION METHODS

Prioritization Methodology

As described in Chapter 7, the ActiveTrans Priority Tool was used to prioritize projects for the Plan. The following describes the methodology for each step of the prioritization process.

1. Measure and Input Data

The first step was to collect data and calculate scores for each of the variables for every corridor segment (project). The reason for inclusion, source and calculation methodology for each variable is outlined below:

- Destinations

The number of destinations is the sum of the number of schools (both public and private schools for Kindergarten through Grade 12), regional libraries, city and county parks, all major grocery stores, and designated polling places within a half mile of each project.

Values for population density and employment density were calculated with projected 2045 Population and Employment data by transportation analysis zone (TAZ). Density calculations were done with ModelBuilder in ArcGIS to determine half mile buffers around each project, determine the area in square miles, as well as both the projected 2045 population and projected 2045 employment numbers within each buffer. Next, the population and employment numbers were divided by the buffer area. The final outputs were in people per square mile for population density and jobs per square mile for employment density.

This variable was used to encourage implementation of projects that would benefit more people and provide access to more places, thus increasing the viability of using the bicycle and

pedestrian network for transportation.

- Equity

Proportions of residents in poverty, minority residents, and households with zero vehicles were calculated using 2016 American Community Survey (ACS) 5-year estimates data. Details of the data used can be found in the table on the next page. This information was included in the analysis to ensure that. This information was included in the analysis to ensure that implementation of the bicycle and pedestrian corridors benefits residents and communities that may need the infrastructure the most, but have often been left behind or harmed by transportation projects.

- Poverty

Minority residents and households with no access to vehicles within each buffer. Next, the population numbers determined for each variable were divided by the total population within buffer area. The final output was a proportion for each variable.

Name	Codes	Description
Total Population	B17021e1	Total: Population for whom poverty status is determined
Total Poverty	B17021e2	Income in the past 12 months below poverty level: Population for whom poverty status is determined
Total Population	B2001e1	Total: Total Population
Total Minority	B02001e3 B02001e4 B02001e5 B02001e6 B02001e7 B02001e8 B03002e13	Black or African American alone American Indian and Alaska Native alone Asian alone Native Hawaiian and Other Pacific Islander alone Some Other Race alone Two or more races Hispanic or Latino: White alone
Total Units	B25044e1	Total: Occupied housing units
Total Units without access to a vehicle	B25044e3 B25044e10	Owner occupied: No vehicle available Renter occupied: No vehicle available

- Improvement over existing conditions

Scores were based on existing bike and pedestrian infrastructure and were determined using ArcGIS if there was any existing bike or pedestrian infrastructure along each proposed corridor segment. This variable was included to account for the difference between corridors where there is no bike or pedestrian infrastructure and corridors where such infrastructure exists but could be improved.

- Demand

Scores were calculated to represent the relative number of short trips (less than 5 miles in length) that are being made along the corridor. This was done to estimate the relative number of people who may bike or walk along the corridor segment if new infrastructure is provided. The data came from the StreetLight Insight platform, which uses anonymized location data from cell phone applications to identify trips and travel patterns. The tool does not currently identify the mode of travel but does allow for calculating the relative

number of all trips on each roadway that are relatively short. For most corridor segments, the score was calculated as the relative number of trips less than 5 miles on the adjacent road. For projects that are not along roadways, or are parallel to roadways with larger traffic volumes, multiple adjacent corridors that provide similar connectivity were given the same demand score.

- Connectivity

Scores were determined using ArcGIS and based on if projects were at the City of Charlottesville and Albemarle County boundary, addressed major barriers, or connected to other infrastructure at an identified key junction or hub. Major barriers were identified by the TJPDC and included input about major barriers from the public. This variable was used due to the importance of having connected infrastructure that crosses physical and political boundaries to allow for bicycle and pedestrian travel throughout the region.

2. Scaling

The next step was scaling to ensure variables are comparable, due to each variable being measured in different units. A common scale of 0-10 was decided on and proportionate scaling was used to adjust the raw values for each variable to fit the common scale. The following formula was used to proportionately scale values:

$$Y = \frac{(X - Min)}{(Max - Min)} * Scale$$

Y = scaled value

X = raw value

Min = Minimum raw value

Max = Maximum raw value

Scale = 10

The sum of scaled values for variables within each category were calculated and categories were then scaled using the same method as above to determine project's un-weighted score for each category.

3. Weighing

Weights were then determined for each category and can be found in the following table. Due to the difference in method of measurement between categories, weights were adjusted to balance out some of the factors in addition to the weights representing community values.

Factor	Factor Weight
Destination	10
Equity	8
Improvements	4
Demand	8
Connectivity	6

4. Scoring and Ranking

To determine prioritization scores for each project, the weighted values for each variable were summed. The projects were then ranked based on the prioritization score and the project list was divided into three tiers to determine the final ATP prioritization. As shown in Appendix A, some adjustments were made to the ATP prioritization ranking for the final prioritization Tiers.

APPENDIX

C

PUBLIC ENGAGEMENT

TJPDC/PEC Hosted Events

Date	Event	Organizer	Location	Attendees
7/20/17	Webinar Viewing: Getting to Yes	PEC / TJPDC	Online	50
11/8/17	Project Kickoff	PEC / TJPDC	Jefferson School	180
11/15/17	Webinar Viewing	PEC	PEC	6
11/17/17	Cypherways	PEC / CACF	Live Arts	80
1/11/18	Webinar Viewing	TJPDC/PEC	TJPDC	6
2/16/18	Joint Greenways Social with Safe Routes to School	PEC/Safe Routes	3-Notch'd Brewery	200
3/6/18	Joint Greenways Social with Charlottesville Trail Runners	PEC	Timberwood Draft House	30
3/15/18	Fifth Street Trail Hub Public Meeting	TJPDC	TJPDC	60
3/25/18	Tell Your Fifeville Stories	TJPDC	Buford Cafeteria	30
5/27/18	HipHop Vibe Ride with the Mayor	BPAC/PEC	Starting at Friendship Court	20
6/21/18	Twilight Bike Ride	PEC/BPAC/The Bridge PAI	The Bridge PAI	30
7/25/18	Summer Social Bike Ride	PEC/BPAC	Washington Park	7
7/26/18	Webinar Viewing: Engaging Elected Officials (American Trails)	PEC/TJPDC	TJPDC	10
9/5/18	September Social Bike Ride	PEC/BPAC	Blue Ridge Cyclery	25
10/17/18	Transportation Open House	TJPDC	TJPDC	50
10/20/18	PEC Annual Meeting	PEC	Castle Hill Farm	150
11/15/18	Sustainability Social Ride	PEC/BPAC/UVA Sustainability	Peloton Station	15
11/28/18	Walking and Biking Toward Equity: an Evening with Charles Brown	PEC/Charlottesville/UVA Architecture/TJPDC/CACF	Jefferson School	150+
11/29/18	Q &A with Charles Brown sponsored by Move2Health	PEC/Move2Health	Boys and Girls Club	25

Presentations and Participation in Other Organizations' Gatherings				
Date	Event	Organizer/Host	Location	Attendees
10/16/17	City Council Testimony		City Council Meeting	50 + TV
11/20/17	City Council Testimony		City Council Meeting	50 + TV
12/4/17	City Council Testimony		City Council Meeting	50 + TV
12/5/17	Tabling	PEC / TJPDC	Downtown Mall/ Mudhouse	25
12/16/17	Tabling	PEC	Downtown Mall/ Mudhouse	60
1/10/18	Tabling (Running Club)	PEC	Champion Brewing Company	100
1/16/18	City Council Testimony		City Council Meeting	50 + TV
1/17/18	Fifth/Ridge/McIntire Master Plan Open House	City of Charlottesville	City Space	100
2/15/18	Piedmont Landscape Association Annual Conference	Virginia Landscape Association	Paramount	250
2/22/18	Rotary Club Luncheon	PEC/City/County	Boar's Head	40
4/9/18	Tabling @ Tom Tom Community Potluck	Tom Tom Founders Festival	ix	200
4/14/18	Tabling @ Ivy Creek Farm Day	Ivy Creek Foundation	Ivy Creek Natural Area	150
4/17/18	Tabling @ UVA Sustainability Fair	UVA Office of Sustainability	Newcomb Hall	200
5/11/18	Tabling @ Fridays After 5	City of Charlottesville	Down Mall	1500
5/17/18	CCRi Lunch and Learn	CCRi	Their Office	20
6/2/18	Tabling @ Land Trust Day	Great Outdoors Provision Company	Barracks Road	100
6/4/18	City Council Testimony	City of Charlottesville	City Hall	50
7/5/18	Albemarle Board of Supervisors Testimony	Albemarle County	Lane Auditorium	30 + TV
7/8/18	BCBA Basketball Tournament 3	BCBA/PEC	Tonsler Park	200
7/10/18	Sustainability Fellows Visit	PEC	PEC	15
8/4/18	Westhaven Community Day	PHAR	Westhaven	500+
8/18/18	Back to School Bash	African American Pastor's Council	Sprint Pavilion	1500
9/6/18	Charlottesville City Council Coordinated Testimony	City of Charlottesville	City Space	30+TV
9/8/18	UVA Planning Graduate Student Career Day	UVA School of Architecture	TJPDC	20
9/22/18	Heritage Harvest Festival	Thomas Jefferson Foundation	Monticello	500+

Presentations and Participation in Other Organizations' Gatherings				
Date	Event	Organizer/Host	Location	Attendees
9/29/18	Rivanna FLOW Festival / Bike Your Park Day	Albemarle County / Chroma Gallery / City of Charlottesville	Darden Towe and Riverview Parks	300+
10/1/18	UVA Transportation Class Presentation	UVA (Andrew Mondschein)	TJPDC	15
10/1/18	Charlottesville City Council Testimony	City of Charlottesville	Council Chambers	50 + TV
10/3/18	Albemarle Board of Supervisors Testimony	Albemarle County	County Office Building	30+TV
10/15/18	Charlottesville City Council Testimony	City of Charlottesville	Council Chambers	50 + TV
11/29/18	Meeting with Foxcroft & Mill Creek HOAs re Biscuit Run Trail	Albemarle County/ HOAs/PEC	County Office Building (5th Street)	50
12/3/18	City Council Testimony	City of Charlottesville	Council Chambers	50 + TV
12/5/18	Albemarle Board of Supervisors Testimony	Albemarle County	Lane Auditorium	30+TV
12/12/18	Albemarle Board of Supervisors Testimony	Albemarle County	Lane Auditorium	50 + TV
12/18/18	Charlottesville Planning Commission	City of Charlottesville	City Hall	20

Meetings with Small Groups of Stakeholders		
Date	Interviewee	Affiliation
6/7/17	Bike / Pedestrian Advocates	Bicycle Pedestrian Advisory Committee
9/11/17	Justin Shimp	Shimp Engineering (Nassau Street Property)
9/12/17	Chris Gensic	Charlottesville Parks and Rec
9/13/17	Crozet Trail Enthusiasts	3-Notch'd Advisory Group
9/18/17	Chris Gensic, Brian Daly	Cville Parks
9/20/17	Diana Foster	Southwood YMCA
9/22/17	Beth Weisbrod	Virginia Capital Trail
9/26/17	Amanda Poncy	City of Charlottesville
9/28/17	Jon Ciambotti	Sentara/CAMBC
9/28/17	Eugene Ryang	Water Street Studio
10/4/17	Andrew Mondschein	UVA Architecture (Transportation Planning)
10/5/17	Bike / Pedestrian Advocates	Bicycle Pedestrian Advisory Committee
10/9/17	Greenways Advisory Group	Various
10/9/17	Tara Boyd	Boyd & Sipe (Land Use Attorneys)
10/11/17	Jon Ciambatti	Sentara/Martha Jefferson
10/13/17	Barbara Brown-Wilson	UVA Planning
10/14/17	Various	William & Mary Alumni
10/17/17	Rip Verkerke	RTF
10/18/17	Dave Stackhouse	CAMBC
10/20/17	Emily Kilroy	Albemarle County
10/25/17	Allie Hill	RTF/3-Notch'd
10/25/17	James Pierce, Shannon Tevendale	Boys & Girls Club
11/1/17	Carolyn Zelikow	Tom Tom Festival
11/7/17	Trail Enthusiasts	RTF
11/8/17	Amanda Harding; Sunshine Mathon	Willowtree Applications; Piedmont Housing Alliance
11/9/17	Antonio Rice	Salvation Army
11/13/17	3 Notch'd trail crew	3 Notch'd Advisory Group
11/14/17	CACF Next Gen Board	Various
11/14/17	Rebecca Schmidt; Putnam Ivey; Cindy Rosales	Thomas Jefferson Health District
11/15/17	Board	Downtown Businesses Association of Charlottesville
11/26/17	Jenny Roe	UVA School of Architecture

Meetings with Small Groups of Stakeholders		
Event	Location	Subject
Monthly meeting	City Hall	June Cycling Event
	BCNA Meeting (Clark)	Easement for Rivanna Trail
	Phone	Brief on Shimp Meeting
	County Office Building	Brain Dump/Action Plan
	Parks & Rec	Intros
Southwood Trails Work Day	Southwood	Intros
Field Trip w 3 notch'd trail group	Richmond	Capital Trail Lessons Learned
	LaTaza	Advice re advisory group
	Telephone	Introductions
	Java Java	Intro to project; Preston Greenway
	Bluegrass Grill	Advice and mentorship
Monthly meeting	City Hall	Project Intro
Regular Meeting	TJPDC	Project Intro, Covenant
	Her office	Bringing HOA's Prop Management Firms, Developers in as stakeholders
	Shenandoah Joe	Intro
	Millie Joe	Project Intro, Community engagement strategy, Collaborative opportunities
Highland Trail Work Day	James Monroe's Highland	Project Intro, Ideas
	PEC	Project Intro
	PEC	Advocacy Umbrella Organization for Cyclists
	PEC	Project Intro
	Cville Coffee	Project intro, Future of advocacy community. Reach out to Susan Stimart (County Econ Dev)
	Call	Project Intro, Outreach ideas, Collaboration Opportunities
	Call	Home Town Summit; Tabling at their Events
	The Nook	Breakfast w Chuck Flink. Project Intro
	Bashir's	Project Intro; Event possibilities; Possible board member
	County Office Bldg	3NT Feasibility Study
	PEC	Cypherways Event
	PEC	Project Intro; Working together
Monthly Meeting	TJPDC	Project intro
	Beer Run	

Meetings with Small Groups of Stakeholders		
Date	Interviewee	Affiliation
11/27/17	Zach Herrman; Amanda Poncy	TJPDC; City of Charlottesville
12/10/17	Pete O'Shea	Siteworks Studio
12/11/17	Ridge Schuyler	PVCC
12/12/17	Kyle Rodland	Safe Routes to School
12/13/17	Health & Wellness Community	Move2Health Coalition
12/14/17	Rush Otis	Habitat for Humanity
12/18/17	Charlene Green	Charlottesville Office of Human Rights
12/18/17	Allan Goffinski	The Bridge PAI
12/19/17	Kari Miller, Liza Fields	International Neighbors
1/3/18	Dan Mahon; Chris Gensic	Albemarle; Charlottesville
1/3/18	Colleen Laney	3-Notch'd Brewing Company
1/5/18	Devin Floyd	Center for Urban Habitats
1/10/18	Health & Wellness Community	Move2Health Coalition
1/10/18	Ben Wilson	Nest Property Management
1/12/18	Jackie Martin	Sentara Martha Jefferson Health Systems
1/15/18	Bill Wuensch, Vlad Gavrilovic	EPR-PC
1/16/18	Neal Halvorson-Taylor, Stewart Gamage	Morven
1/16/18	Rip Verkerke, Jon Canon	UVA Law School
1/19/18	Greenways Advisory Group	Various
1/22/18	Dan Heuchert, Chris Leblanc, Tim Cognata, Leigh Wion, David Golladay, Rob Finley, Stephanie Blanch, Rick Randolph, Dan Mahon	Foxcroft HOA Mill Creek HOA Oak Hill Albemarle County
1/24/18	Dan Tucker	SJ Collins Enterprise (5th Street Station)
1/24/18	Residents	Tenth and Page Neighborhood Association
1/25/18	Chris Gensic, Dan Mahon	Charlottesville, Albemarle
1/25/18	Residents, Habitat redevelopment team	Southwood Community
1/26/18	Kyle Rodland	Safe Routes to School
1/27/18	Racial / Community Understanding Group	Citizen Needs (Convened by Clarence Green)

Meetings with Small Groups of Stakeholders		
Event	Location	Subject
	PEC	Community engagement; relationship between Greenways plan and Charlottesville Bike/Ped plan
	Siteworks	
	PEC	Connectivity w PVCC and surrounding community
	PEC	Program opportunities
	YMCA	Learning about organization. Possibility of joining.
	Southwood	Partnership opportunities, connecting w Southwood Residents
	Brazos	Network strategy, Equity Planning, collaboration opportunities
	Java Java	
Cville 10-miler Registration Party	Random Row Brewing Co	Partnership opportunities, connecting w excluded communities
	PEC	Rotary Club Presentation; 5th Street Station; Reid's Rail Trail
	3-Notch'd	Feb 9 Push-in event
	PEC	Urban Wilds; Place-specific interactive programming on greenways
	YMCA	Project updates
	PEC	Engagement with HOAs
	Mudhouse	Collaboration; Public Health Basis for Project; Assistance from Move2Health
	901 E Jefferson St	5th Street Corridor Study - -Community Outreach
	UVA Law School	Morven Trail Next Steps
Regular Meeting	TJPDC	
	Foxcroft Club house	5th Street Trail Hub Stakeholders Meeting. Possible trail easement
	County Office, 5th	5th Street Trail Hub Stakeholders Meeting.
Monthly Meeting	City of Promise	Project Intro, Updates. Input
Periodic Planning Session	PEC	Greenways Presentation
Redevelopment Meeting	Southwood	Getting to know the group and their processes
	PEC	Joint Event at 3-Notch'd
Community Resolve Meeting	Jefferson School	Community bridge building study circle

Meetings with Small Groups of Stakeholders		
Date	Interviewee	Affiliation
1/29/18	Trail/Mobility Advocates Focus Group	Various stakeholder leaders
1/30/18	Neighboring Businesses Focus Group	Various stakeholder leaders
1/30/18	Quinton Harrell	Heritage United Builders / Community Activist
1/31/18	Neighboring Businesses Focus Group	Various stakeholder leaders
1/31/18	Refugees and refugee advocates	International Neighbors
2/3/18	Social Justice Advocates	Various
2/5/18	Adam Moore	VDOT
2/8/18	Residents, Habitat redevelopment team	Southwood Community
2/13/18	Erika Viccellio	United Way
2/13/18	Chris Gensic, Dan Mahon	Charlottesville, Albemarle
2/14/18	Health & Wellness Community	Move2Health Coalition
2/14/18	Barbara Brown Wilson	UVA School of Architecture
2/14/18	Chris Schooley, Elise Cruz	UVA Foundation
2/21/18	Barbara Hirshorn	Gerontworks (Gerontologist)
2/22/18	John Ferguson	UVA Hospital
2/23/18	Larry Garrettson	Willoughby HOA
2/25/18	Julie Roller	Thomas Jefferson Foundation
2/26/18	Environmental Activists	PEC Board
2/27/18	Robert Brickhouse	Retiree
2/28/18	Downtown Businesses	Various
3/1/18	Amy Laufer	Charlottesville School Board
3/1/18	Fifth Street Station Merchants	Timberwood, Wegmans, Dick's Sporting Goods, Planet Fitness
3/1/18	Dan Mahon, David Golladay, Leigh Wion, Chris Leblanc, Kevin Grunden	Albemarle County, Mill Creek HOA, Foxcroft HOA
3/2/18	Ned Michie; Kathy Galvin	Greenbriar Neighborhood Association/ RTF; Charlottesville City Council
3/6/18	Trail Activists	Rivanna Trail Foundation
3/7/18	Matthew Ware (Fox)	Community Bikes
3/8/18	Mobility Advocates	Various (esp VDOT)
3/12/18	Heather Hill	Charlottesville City Council
3/12/18	Todd Niemeier	Charlottesville Office of Human Rights
3/14/18	Move2Health Coalition	Various
3/14/18	Austin Shaffer	Piedmont YMCA

Meetings with Small Groups of Stakeholders		
Event	Location	Subject
	TJPDC	5th Street Trail Hub Stakeholders Meeting.
	County Office, 5th	5th Street Trail Hub Stakeholders Meeting.
	Mel's Cafe	Intros / Ladder of Opportunity
	County Office, 5th	5th Street Trail Hub Stakeholders Meeting.
Great Neighbors Bike Giveaway	Michie Drive	Understanding mobility issues for those w/o cars
Theater of the Oppressed Workshop	PVCC	
	5th St. Station	Methods to safely cross 5th St Station Parkway
Redevelopment Meeting	Southwood	Connectivity / Trails
	Shenandoah Joes	Intros, collaboration opportunities
Periodic Planning Session	PEC	Greenways Presentation
	YMCA	
	Shenandoah Joes	
	Boar's Head	Project Intro
	Mud House	Project Intro; Accessibility
	PEC	
	PEC	
	Moose's by the Creek	Project update
PEC Donor Lunch	PEC	Project intro, listening
	Java Java	Project intro, listening
Downtown Business Alliance Annual Meeting	Paramount	
	LaTaza	Project intro, listening
	Fifth Street Station	Project intro, listening
	Foxcroft Club House	Project intro, listening
	Mudhouse	Greenbriar Trails; Socio-economic factors of trails
Monthly Board Meeting	Beer Run	Updates, 5th Hub, Greenbriar Tunnel
	PEC	
29/Hydraulic Public Meeting	CHS	29/Hydraulic Area Plan
	The Nook	Project intro, updates, Greenbriar Tunnel
	PEC	Reaching low-wealth communities
Monthly Meeting	YMCA	Social media, inventory of resources, Open Streets event
	YMCA	Project Intro
Tim Keller's Cultural Landscapes Class	A-School	Presentation, Survey, Discussion

Meetings with Small Groups of Stakeholders		
Date	Interviewee	Affiliation
3/15/18	UVA Students (~20)	UVA School of Architecture
3/17/18	Housing Justice Advocates	Public Housing Association of Residents
3/22/18	Michael Barnes	Rivanna Trail Foundation
3/26/18	Clarence Green	Charlottesville Resolve
3/26/18	Pantops Stakeholders	Pantops Community Advisory Committee
3/27/18	Chris Schooley, Elise Cruz, Paula Figgatt; Bill Palmer; Chris Gensic; Dan Mahon	UVA Foundation; UVA Office of the Architect; Charlottesville, Albemarle
4/11/18	Health & Wellness Community	Move2Health Coalition
4/12/18	Mike Stoneking	Architect
4/19/18	Greenways Advisory Group	Various
4/23/18	Liz Belcher	Roanoke Valley Greenways Commission
4/25/18	Steve Bray, Jenny Miles	Norfolk Southern Railroad (Real Estate Office)
4/30/18	Coy Barefoot	Albemarle Historical Society
5/1/18	Trail Advocates	Rivanna Trails Foundation
5/2/18	Equity Activists	Various
5/6/18	Jennifer Roe	UVA School of Architecture / School of Public Health
5/8/18	Jim Murray	UVA Board of Visitors, Presidential Precinct
5/9/18	Barbara Yager	City of Promise
5/9/18	Daisy Ortega	Virginia Foundation for Healthy Youth
5/10/18	Andy Wilson	Rivanna Conservation Alliance (ex officio)
5/10/18	Heritage Conservationists	Piedmont Area Preservation Alliance
5/11/18	Liz Russell	Monticello
5/14/18	Public Housing Residents	Public Housing Association of Residents
5/18/18	Barbara Brown Wilson	UVA School of Architecture
5/25/18	GIS Specialists: Dave Fox, Mark Simpson, Amy Ferguson, Chris Gist	Albemarle County, City of Charlottesville, Rivanna Trails Foundation, UVA Scholars lab
5/29/18	Westhaven Day Stakeholders	Various. PHAR Hosting
5/31/18	Allan Goffinski	The Bridge Progressive Arts Initiative
6/5/18	Trail Activists	Rivanna Trail Foundation
6/6/18	Kathy Galvin	Charlottesville City Council
6/6/18	Various	Various
6/7/18	Laura Ellis	Charlottesville Dept of Risk Management
6/13/18	Health & Wellness Community	Move2Health Coalition
6/13/18	Leah Wion, Wayne Snyder	Mill Creek, Foxcroft HOAs
6/14/18	Alan Goffinski, Niko Test	The Bridge PAI; City of Charlottesville

Meetings with Small Groups of Stakeholders		
Event	Location	Subject
UVA, Gentrification, and Housing Justice Conference	CitySpace	
	PEC	Pantops Master Plan recommendations
	Pie Chest	Project Intro, equity
Pantops Master Planning Transportation Forum	Martha Jefferson	Walk/Bike Connectivity
	Boar's Head	Working relationship, Some routes
Monthly Meeting	YMCA	Social Media, Health Data, Open Streets Event
	PEC	Comprehensive Plan
Regular Meeting	TJPDC	
VAULT Conference	Roanoke	Bike Tour of Roanoke Greenways
	N.S. Roanoke HQ	Land/easement acquisition for rail trail project
	Cville Coffee	Intros, Working together
Monthly Board Meeting	Beer Run	
UVA Community Engagement Forum	Jefferson School	Research topics for community collaboration. My focus: transportation
	Belmont	Impacts of stress / stress reduction strategies
	His office	Intros, Connectivity, working relationships
Move2Health Meetings	YMCA	Westhaven Walks and Community Day
Community Engagement Workshop	YMCA	Engaging and Empowering Priority Communities
	Trail Hub	Trail Hub, Biscuit Run Trail tour
PAPA/Preservation Annual Event	Morven	Heritage area connectivity
	LaTaza	Heritage area connectivity
Monthly Meeting	Legal Aid Justice Center	Getting to know them
	Shenandoah Joes	Community Engagement Strategies
One-Map Task force meeting	TJPDC	Working group convened to centralize trail and bike infrastructure data
Westhaven Day Planning Session	Westhaven Community Room	Westhaven Walks and Community Day
	The Bridge PAI	6/21 community bike ride
Monthly board meeting	Beer Run	
	Marie Bette	Governance
CACF Annual Luncheon	Boar's Head	CACF Year in review, digging deeper
	NDS Conference Room	Safety and liability at events
Monthly meeting	YMCA	Photo voice, CATCH Program, Survey placement
	Foxcroft Clubhouse	Strategy for Biscuit Run Trail easement
	The Bridge PAI	6/21 Bike ride event

Meetings with Small Groups of Stakeholders		
Date	Interviewee	Affiliation
6/14/18	Transportation Advocates	Various. MPO Hosting
6/15/18	Rip Verkerke	Rivanna Trail Foundation
6/18/18	Lynn Childers	Charlottesville City Police
6/19/18	Park Advocates	Various
6/22/18	Greenways Advisory Group	Various
6/25/18	Pantops Residents	Pantops CAC
6/26/18	Westhaven Day Stakeholders	Various. PHAR Hosting
6/26/18	Rebecca Schmidt	Thomas Jefferson Health District
7/3/18	Erika Goode	UVA Recreational Sports
7/5/18	Kathy Galvin	Charlottesville City Council
7/10/18	Leah Wion; Chris Leblanc, Wayne Snyder; Dan Mahon	Mill Creek; Foxcroft HOAs; Albemarle County
7/12/18	Mobility Advocates	Various
7/12/18	Bike / Pedestrian Advocates	Bicycle Pedestrian Advisory Committee
7/16/18	Giles Morris	Charlottesville Tomorrow
7/16/18	Jenny Miles	Norfolk Southern Railroad
7/19/18	Gwen Cook, Katie Lloyd, Joyce Figueroa	Mecklenberg Count Parks (Greenways Team)
7/24/18	Westhaven Day Stakeholders	Various. PHAR Hosting
7/31/18	Westhaven Day Stakeholders	Various. PHAR Hosting
8/1/18	Richmond Cyclists	Walk/Bike RVA
8/5/18	Runners	Charlottesville Area Trail Runners
8/7/18	Trail Advocates	Rivanna Trail Foundation
8/8/18	Health & Wellness Community	Various
8/8/18	Brooke Rae	International Rescue Committee
8/8/18	Richmond Cyclists	Walk/Bike RVA
8/9/18	Urbanists	PLACE Design Task Force
8/9/18	Biscuit Run Enthusiasts	Various
8/15/18	Richmond Cyclists	Walk/Bike RVA
8/21/18	Community Leaders	Various
8/22/18	Biscuit Run enthusiasts	Various

Meetings with Small Groups of Stakeholders		
Event	Location	Subject
L RTP Open House	TJPDC	
	PEC	Sustained advocacy
	PEC	Program opportunities, liaisons w CPD
Biscuit Run Park public meetings	County Office Building	Biscuit Run Park planning
Regular Meeting	TJPDC	
Pantops Master Plan Meeting	Martha Jefferson	
Westhaven Day Planning Session	Westhaven Community Room	Westhaven Walks and Community Day
	Health Department	CDC Grant
	PEC	Connecting with / hearing from UVA Students
	Cville Coffee	Advocacy, walkability
	Wegmans Cafe	Autumn HOA education event
Fifth Street Corridor Public Meeting	City Space	
Monthly meeting	City Space	
	Millie Joe	Intros / collaborator
	Bodo's	Rail to trail project
	Mecklenberg County Parks Dept	Background, lessons from Charlotte
Westhaven Day Planning Session	Westhaven Community Room	
Westhaven Day Planning Session	Westhaven Community Room	
Advocacy Academy	Richmond	
Sunday Group Run	Boar's Head	
Monthly Board Meeting	Beer Run	
Move2Health Coalition Meeting	Martha Jefferson Cancer Center	
	PEC	
Advocacy Academy	Richmond	
Monthly Meeting	City Hall Basement	Alleyways
Biscuit Run Planning Event	County Office Building	2nd Biscuit Run Public Meeting
Advocacy Academy	Richmond	
City Planning Commission Work Session	Key Rec Center	Community Engagement Strategy for City Comp Plan
Biscuit Run Planning Event	County Office Building	Conceptual Designs

Meetings with Small Groups of Stakeholders		
Date	Interviewee	Affiliation
8/23/18	Kevin McDermott, Dan Mahon, Dan Butch, Rachel Falkenstein, Andrew Knuppel	Albemarle County Staff
8/29/18	Giles Morris	Cville Tomorrow
8/29/18	Richmond Cyclists	Walk/Bike RVA
8/30/18	Dan Monahan	BAMAworks Foundation
8/30/18	Sustainability Advocates	Various
9/4/18	Trail Advocates	Rivanna Trail Foundation
9/5/18	Greenways Advisory Group	Various
9/6/18	UVA Transportation Stakeholders	Various (mostly UVA staff)
9/6/18	UVA Transportation Stakeholders	Various (mostly UVA staff)
9/6/18	Bike/Ped Advocates	Bicycle Pedestrian Advisory Committee
9/7/18	UVA Transportation Stakeholders	Various (mostly UVA staff)
9/11/18	Racial Justice Activists	SURJ
9/12/18	Fry's Spring Residents	Various
N/A	Michael Barnes	RTF
9/17/18	Erica Goode, Sarah Littlefield	UVA Rec Sports; UVA Transportation
9/17/18	UVA, City Transportation Stakeholders	Mostly UVA students
9/20/18	Planning and Coordination Council	Albemarle, Charlottesville, UVA leadership
9/21/18	Environmental Advocates	Various
9/21/18	Dan Mahon	Albemarle County
9/25/18	Susan Kruse	Appalachian Voices
9/27/18	Tree Stewards	Charlottesville Tree Commission
9/28/18	Developers, Planners	Various
9/28/18	River advocates	Various
9/28/18	River advocates	Various
10/2/18	Trail Advocates	Rivanna Trail Foundation
10/4/18	Board of Supervisors and City Council	Albemarle County / City of Charlottesville
10/4/18	Bike/Ped Advocates	Bicycle Pedestrian Advisory Committee

Meetings with Small Groups of Stakeholders		
Event	Location	Subject
	County Office Building	Community Engagement Through CACs
	PEC	Long-form story on Biscuit Run / Southern Urban connections
Advocacy Academy	Richmond	
	PEC	Grant for Bike Cville program
Better Business Challenge event	Kardinal Hall	
Monthly Board Meeting	Beer Run	
Regular Meeting	TJPDC	
Transportation Summit Kickoff	Rotunda	
Transportation Focus Group: Bike/Ped	Newcomb Hall	
Monthly meeting	NDS Conference Room	
Transportation Focus Group: Alt Trans Programs	Newcomb Hall	
Social Happy Hour	FireFly	Getting to know them
Neighborhood Association Meeting	Cherry Avenue Church	Connectivity along Moore's Creek
	TJPDC	Corridor map
	AFC	Joint Bike Ride
Emmett Streetscape Public Meeting	Lambeth Commons (UVA)	
Quarterly Meeting	County Office Building	Birdwood Redevelopment, Sunset Ave Bridge
Environmental Roundtable	PEC	
	Mud House	Biscuit Run
	Java Java	
Joint meeting with BPAC	NDS Conference Room	High Street StreetScape project
ULI Rivanna River Renaissance Presentation	County Office Building	Successful River Plans (Roanoke and Greenville, SC)
Rivanna River conference	County Office Building	
TJPDC Rivanna River Planning Session	County Office Building	Public input for Rivanna River Corridor Plan
Monthly Board Meeting	Beer Run	
Joint City/County Leadership Summit	County Office Building (5th St)	Joint cooperation, incl trails and transportation
Monthly meeting	NDS Conference Room	

Meetings with Small Groups of Stakeholders		
Date	Interviewee	Affiliation
10/5/18	Manager	Peloton Station
10/6/18	Racial Justice Activists	Charlottesville Clergy Collective
10/10/18	Elementary kids and families	Clark Elementary
10/10/18	Public Health Advocates	Move2Health Coalition
10/11/18	Greenways Technical Committee	Albemarle County, City of Charlottesville, TJPDC
10/11/18	Rick Randolph	Albemarle County
10/12/18	Trail Advocates (Esmont)	Friends of Esmont
10/17/18	Bike / Pedestrian Advocates	Various
10/22/18	Emily Hayes, Elliot Robinson	Charlottesville Tomorrow
10/24/18	Trail Advocates	Albemarle County Trail Ambassadors
10/24/18	Bike / Pedestrian Advocates	Various
10/25/18	Master Gardeners	Garden Club of Virginia
10/25/18	Albemarle County Residents	Places-Rio-29 Community Advisory Council
10/27/18	Jim Ryan; UVA Parents	University of Virginia
10/31/18	Olivia Patton	Jefferson School African American Heritage Center
11/1/18	Bike/Ped Advocates	Bicycle Pedestrian Advisory Committee
11/1/18	Bike / Pedestrian Advocates	Advocacy Social
11/2/18	Shenandoah Valley Bike / Ped Enthusiasts	Various
11/7/18	Carlton Neighborhood Residents	Various
11/8/18	Dan Mahon	Albemarle County
11/12/18	Low wealth residents	Public Housing Association of Residents
11/14/18	Public Health Advocates	Move2Health Coalition
11/15/18	Greenways Technical Committee	Albemarle, Charlottesville, UVA staff
11/15/18	Ellen Bassett	UVA School of Architecture
11/15/18	Emily Kilroy	Albemarle County
11/16/18	Howard Evergreen; Dan Mahon	River Bluff HOA; Albemarle County
11/19/18	Olivia Patton	Jefferson School
11/20/18	Runners	Charlottesville Area Trail Runners
11/26/18	Dan Mahon, Rick Randolph, Emily Kilroy	Albemarle County
11/28/18	Diantha McKeel; Amanda Poncy; Eboni Bugg	Albemarle County; Charlottesville; CACF

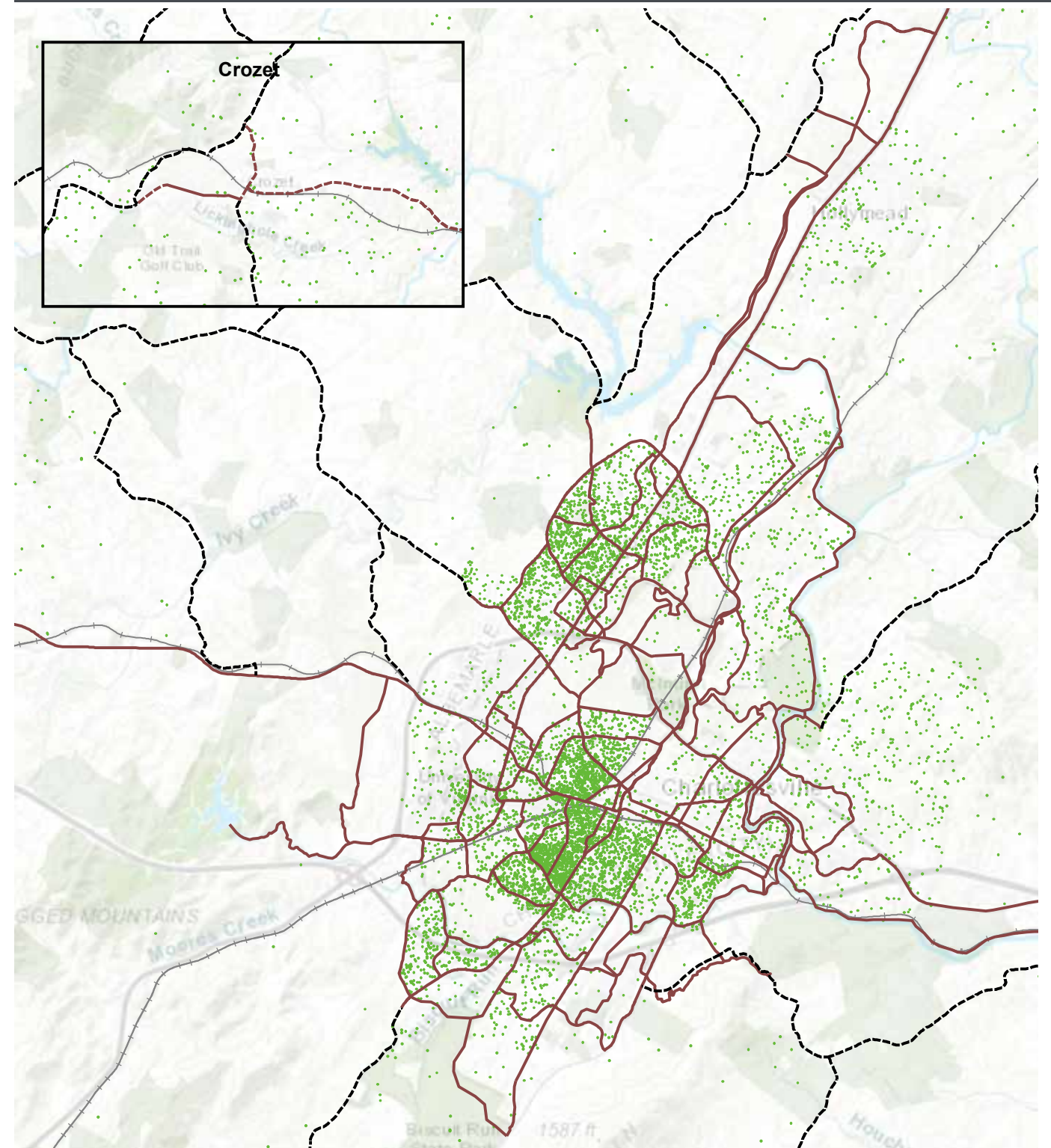
Meetings with Small Groups of Stakeholders		
Event	Location	Subject
	Peloton Station	Hosting next bike ride
Pilgrimage to Monticello	Jefferson School to Monticello	Walking through history and neighborhoods from the Jefferson School to Monticello
Walk to School Day	Clark Elementary School	Distributed treats who walked to school
	YMCA	Collective Impact; Photo Voice
Monthly working group meeting	TJPDC	One map schema; Corridors; Prioritization
	Telephone	Biscuit Run connector acquisition process
	Anna Boeshenstein's house (Esmont)	Possibilities for a trail or open space opportunities
PEC Advocacy Social	3 Notch'd	What ingredients are needed for change
	PEC	Connectivity esp along souther edge (2 hour interview)
Initial Meeting	County Office Building	
PEC Advocacy Social	Court Square Tavern	What ingredients are needed for change
Annual Sustainability Forum	Paramount	General
Monthly meeting	County Office Building	Rio-29 Master Plan
UVA Parents Weekend Group Run	UVA Grounds	Project intro
	Jefferson School	Charles Brown event
Monthly meeting	NDS Conference Room	Budget, Dockless Mobility
PEC Advocacy Social	Court Square Tavern	Coordinating legislative advocacy among stakeholder groups
Harrisonburg / Rockingham Bike Summit	Harrisonburg	
CDBG Task Force Meeting	Sunrise Community Center	
	PEC	Biscuit Run Community Outreach
Monthly Board Meeting	Legal Aid Justice Center	Charles Brown
	YMCA	Collective Impact; Photo Voice
Regular Meeting	TJPDC	Charles Brown, TJ Bike Ped Plan map and prioritization
	Downtown Mall	
	Call	Strategies for engaging w HOAs
	The Nook	Strategies for engaging w HOAs
	Jefferson School	Charles Brown Visit
Weekly Tuesday Run	5th Street Station	Local funding
	County Office Building	Strategy for HOA Meeting
Luncheon with Charles Brown	The Shebeen	

Meetings with Small Groups of Stakeholders		
Date	Interviewee	Affiliation
11/28/18	Andrea Douglas; Jordy Yeager	Jefferson School; C-ville Weekly
11/28/18	Interested in dockless mobility	Various
11/29/18	Toni Barskile, Charles Brown	Albemarle County Resident, UVA Employee
12/4/18	Public Health Advocates	Various
12/4/18	Trail Advocates	Rivanna Trail Foundation
12/6/18	Bike/Ped Advocates	Bicycle Pedestrian Advisory Committee
12/7/18	Emily Hays	Charlottesville Tomorrow
12/7/18	Environmental Advocates	Various
12/13/18	One-Map Working Group	Charlottesville; Albemarle County; UVA
12/14/18	Alex Bryant	Tom Tom Festival
12/14/18	Interested in dockless mobility	Various

Meetings with Small Groups of Stakeholders		
Event	Location	Subject
Walking tour with Charles Brown	Downtown Mall	Hidden story of Charlottesville
Lime-Bike Presentation	City Hall	
Windshield Tour of Commonwealth	Car	Hydraulic/29 Neighborhood Tour, Follow up to Diantha McKeel meeting
MAPP2Health Council Meeting 1	Health Department	
Monthly Board Meeting	Beer Run	
Monthly meeting	NDS Conference Room	Charles Brown Recap; Brandon Ave Bike/Ped Tunnel (UVA)
	PEC	Biscuit Run Story; Survey Results
Conservation Roundtable	PEC	Top issues, Biscuit Run connector process
	TJPDC	One Map Project
	PEC	Group Bike Rides
Bird Bike Presentation	City Hall	Bird Scooter Presentation

APPENDIX D

RACIAL DOT MAPS

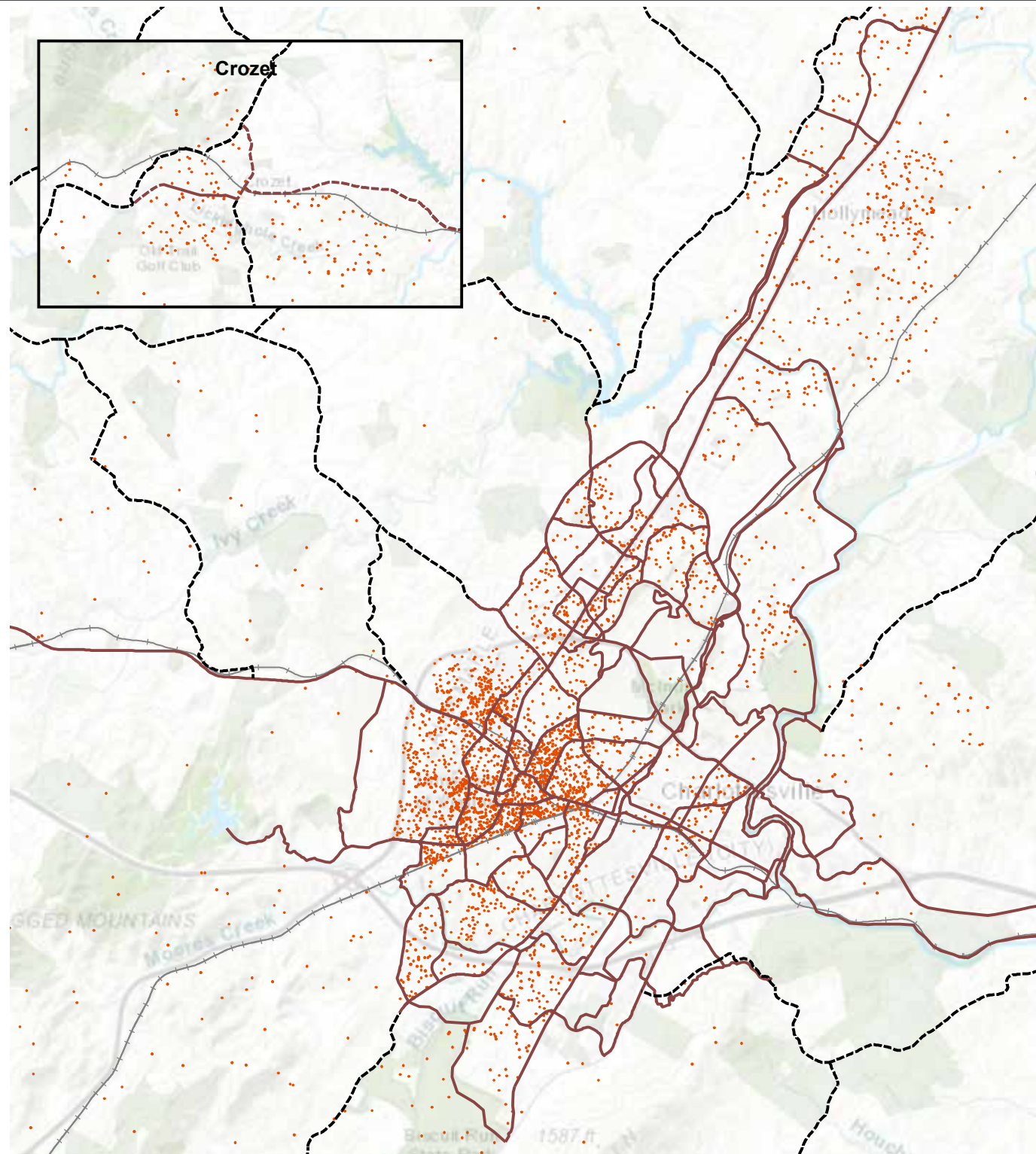


Map 7.2
Regional Demographics

ABOUT THIS MAP: This map shows the regional bicycle and pedestrian corridors overlaid with race and population density. Data is taken from the American Community Survey. The map is inspired by The Racial Dot Map created by The University of Virginia.

FEATURES

- Parks and Conservation
- Lakes and Rivers
- Railroads
- Urban Corridors
- Rural Corridors
- Black
- 1 Dot= 2 Persons

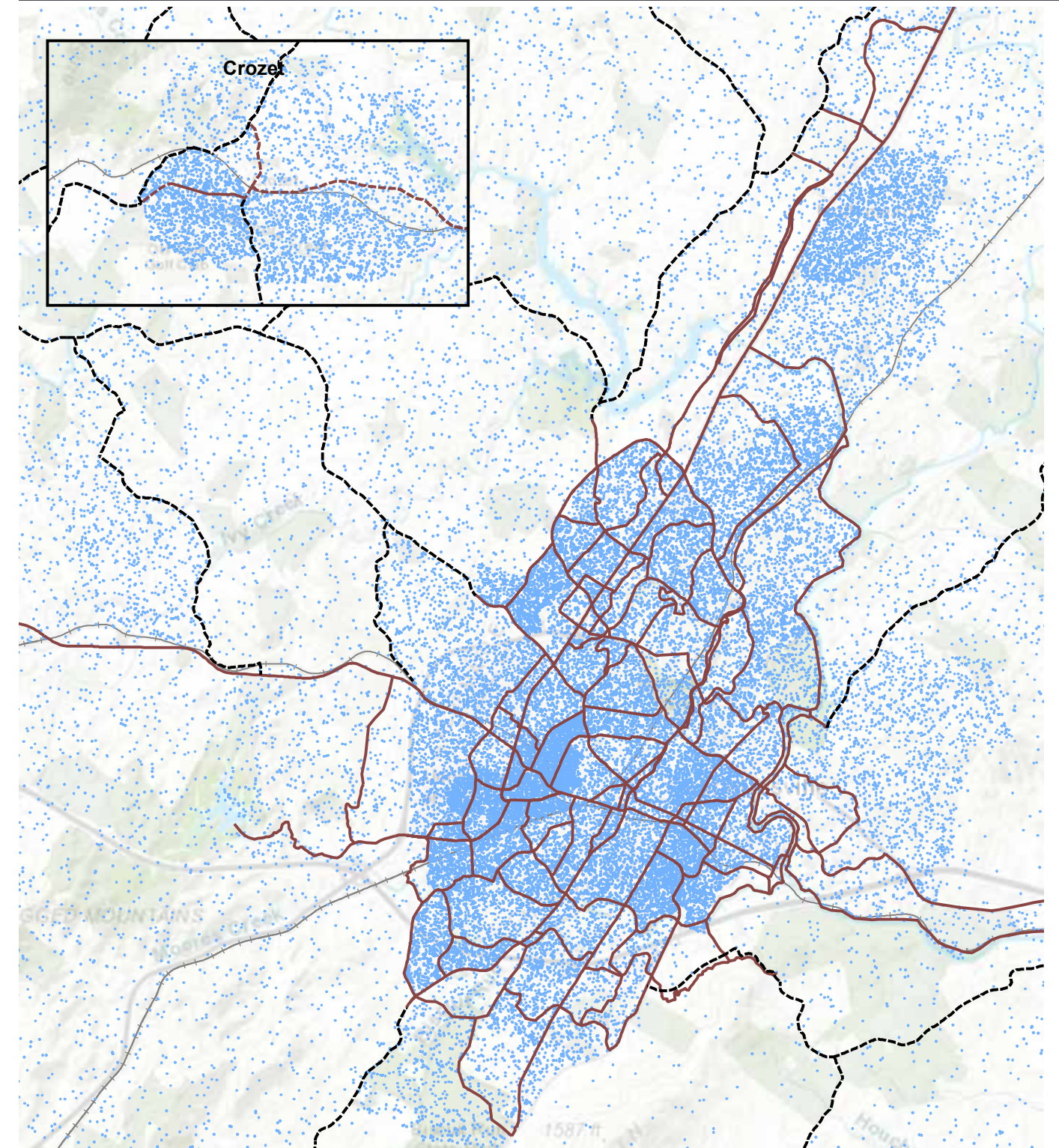


Map 7.2
Regional Demographics

FEATURES

- Parks and Conservation
- Lakes and Rivers
- Urban Corridors
- - - Rural Corridors
- Asian
- 1 Dot= 2 Persons
- + Railroads

ABOUT THIS MAP: This map shows the regional bicycle and pedestrian corridors overlaid with race and population density. Data is taken from the American Community Survey. The map is inspired by The Racial Dot Map created by The University of Virginia.

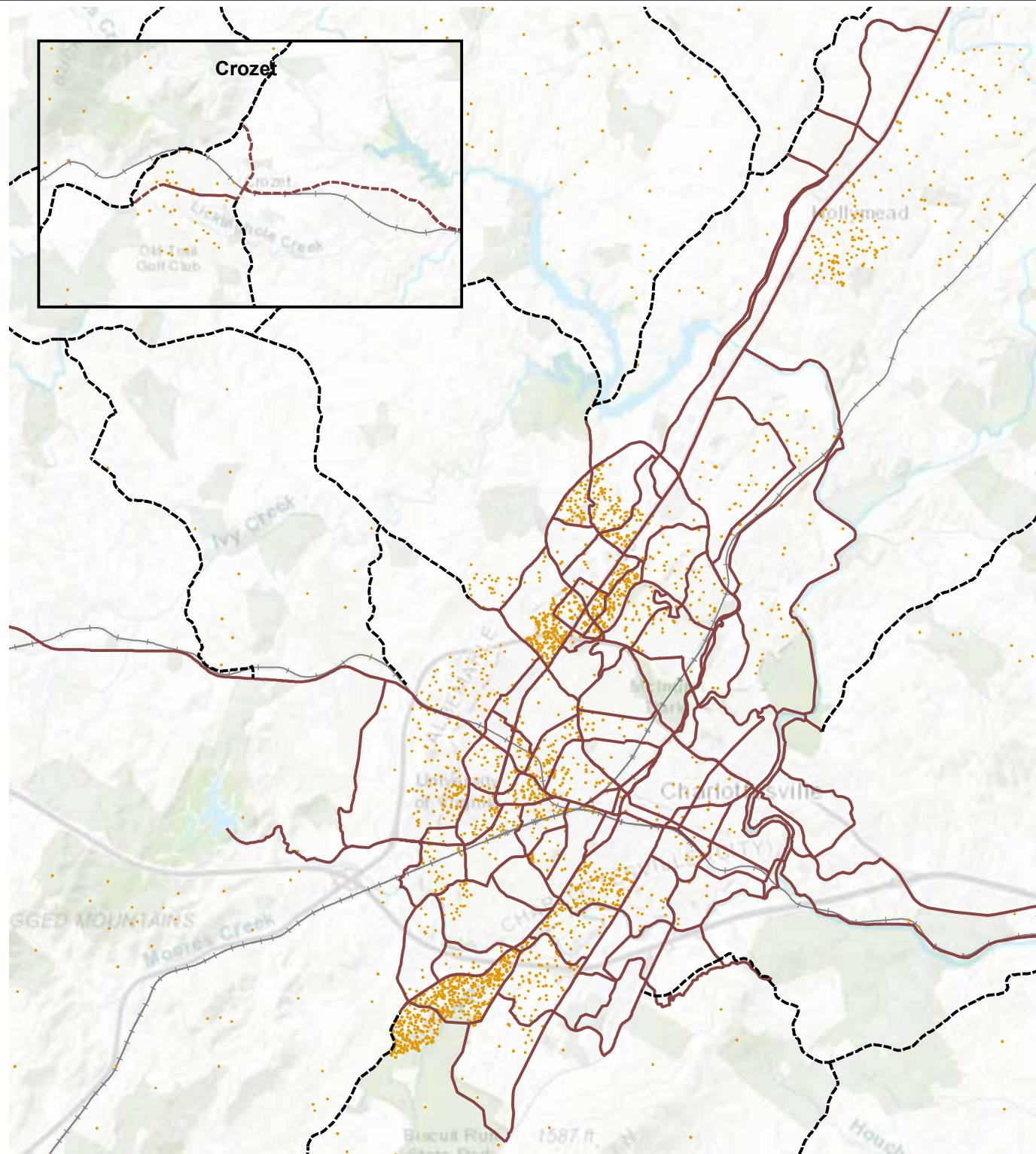


Map 7.2
Regional Demographics

FEATURES

- Parks and Conservation
- Lakes and Rivers
- Urban Corridors
- - - Rural Corridors
- White
- 1 Dot= 2 Persons
- + Railroads

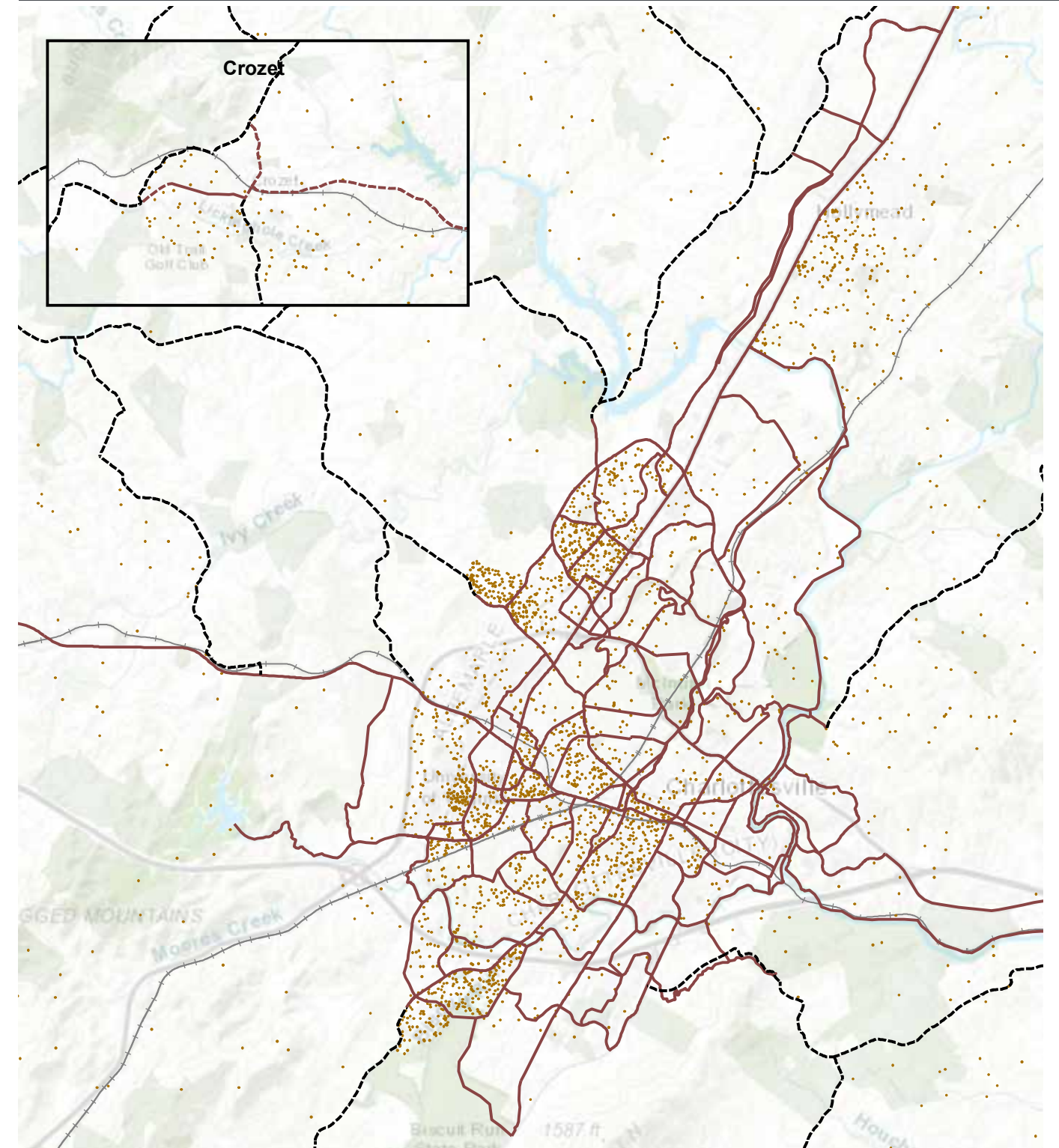
ABOUT THIS MAP: This map shows the regional bicycle and pedestrian corridors overlaid with race and population density. Data is taken from the American Community Survey. The map is inspired by The Racial Dot Map created by The University of Virginia.



Map 7.2
Regional Demographics

- FEATURES**
- Parks and Conservation
 - Lakes and Rivers
 - Railroads
 - Urban Corridors
 - Rural Corridors
 - Hispanic
 - 1 Dot= 2 Persons

ABOUT THIS MAP: This map shows the regional bicycle and pedestrian corridors overlaid with race and population density. Data is taken from the American Community Survey. The map is inspired by The Racial Dot Map created by The University of Virginia.



Map 7.2
Regional Demographics

- FEATURES**
- Parks and Conservation
 - Lakes and Rivers
 - Railroads
 - Urban Corridors
 - Rural Corridors
 - Other/ Native American/ Multi-Racial
 - 1 Dot= 2 Persons

ABOUT THIS MAP: This map shows the regional bicycle and pedestrian corridors overlaid with race and population density. Data is taken from the American Community Survey. The map is inspired by The Racial Dot Map created by The University of Virginia.